



**Electrolux**  
PROFESSIONAL

## PLUS - Static Preparation 1200 mm Wall Cupboard with 2 Sliding Doors

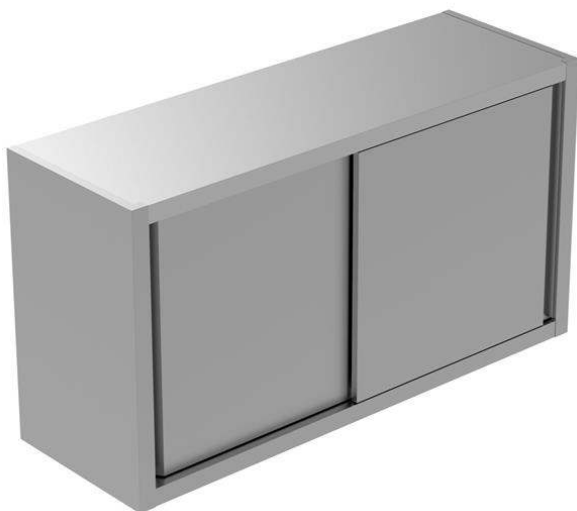
ITEM # \_\_\_\_\_

MODEL # \_\_\_\_\_

NAME # \_\_\_\_\_

SIS # \_\_\_\_\_

AIA # \_\_\_\_\_



134077 (GPS1200E)

Wall Cupboard with 1 shelf  
and 2 sliding doors, 1200mm

### Short Form Specification

#### Item No. \_\_\_\_\_

Made entirely from 304 AISI stainless steel, 0,8mm in thickness. Inner welded frame in stainless steel. Upturned panel edges. 10mm radius corner between base and back panel for a perfect cleanability. 50mm top and base panel. Intermediate shelf adjustable at three different heights. Two sound-deadened sliding doors.

### Main Features

- Enhanced stability and solid construction. Stability, loading and stress tests by external certified body.
- Product range suitable for international tenders requirements for intense usage installations.

### Construction

- Doorsliding system is fluent and reliable, tested with over 80.000 cycles by external certified body.
- Constructed entirely in 304 AISI stainless steel.
- Sliding doors are in stainless steel and double-walled with sound-deadening material inside. They are 7/10mm in thickness with roll bearings and end limit stop.
- Cupboard interior has easy access thanks to completely openable doors.
- Intermediate shelf has 40mm high profile, is 8/10 in thickness with upturned edges and bar reinforcement. It can be positioned at three different heights.
- Base panel has 40mm high profile, is 8/10 in thickness with upturned edges and bar reinforcement.

APPROVAL: \_\_\_\_\_



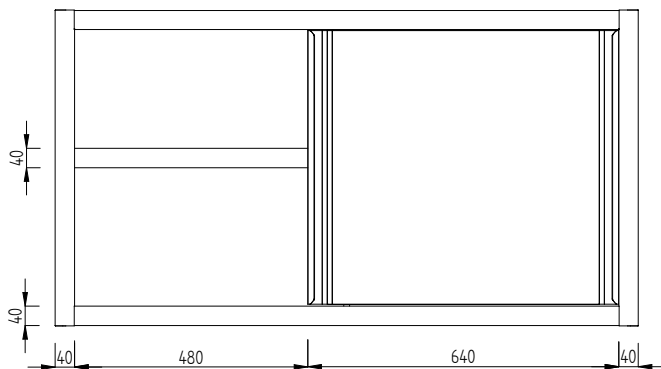
Experience the Excellence  
[www.electroluxprofessional.com](http://www.electroluxprofessional.com)



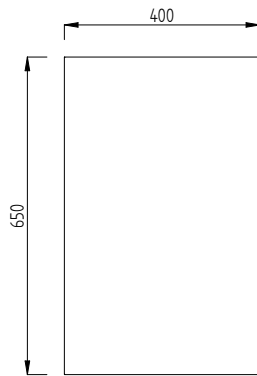
**Electrolux**  
PROFESSIONAL

## PLUS - Static Preparation 1200 mm Wall Cupboard with 2 Sliding Doors

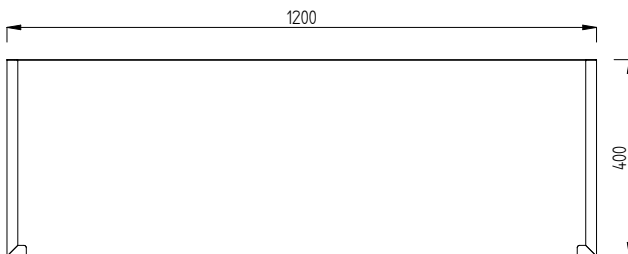
Front



Side



Top



### Key Information:

Cabinet width:	
134077 (GPS1200E)	1120 mm
Cabinet depth:	360 mm
Cabinet height:	580 mm
N° of doors:	2
External dimensions, Width:	1200 mm
External dimensions, Depth:	400 mm
External dimensions, Height:	650 mm
Net weight:	33 kg

PLUS - Static Preparation  
1200 mm Wall Cupboard with 2 Sliding Doors

The company reserves the right to make modifications to the products without prior notice. All information correct at time of printing.

2025.06.29